



# Waveform Analysis Software AS-70



# Completely Renewed Analysis Software from Rion

The Waveform Analysis Software AS-70 reads data from WAVE files and offers a wide range of functions, including graph display, level processing, frequency analysis (FFT analysis and octave band analysis), file output, and playback.

Easy and precise operation

Vastly improved processing speed

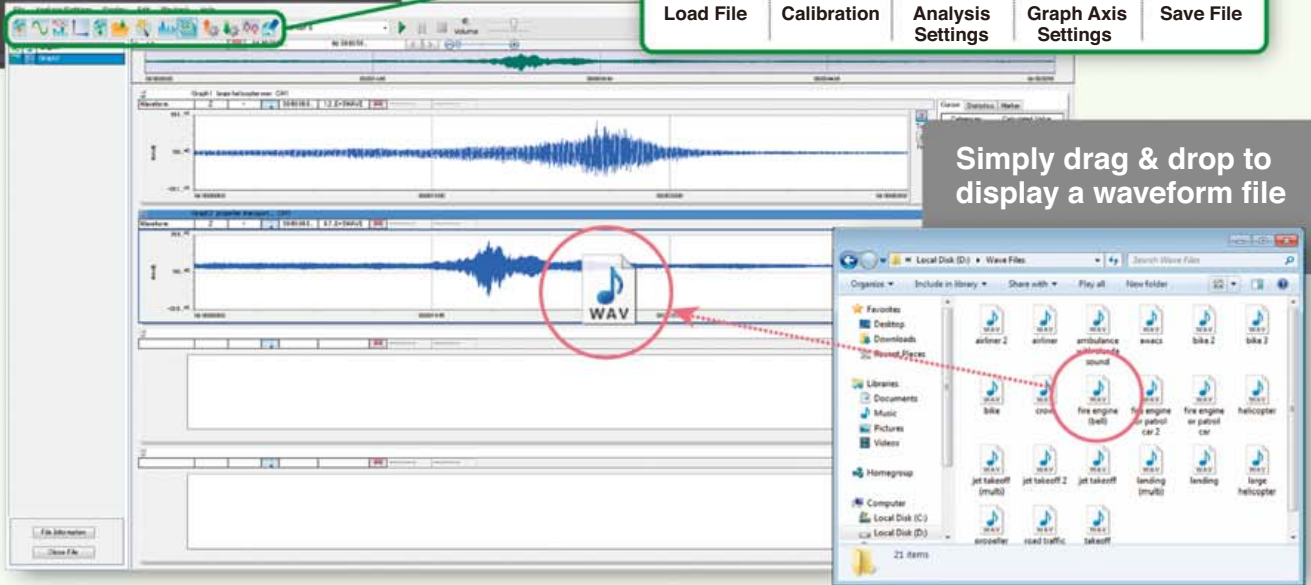
Simultaneous analysis of multiple files

User marker function

Digital volume control

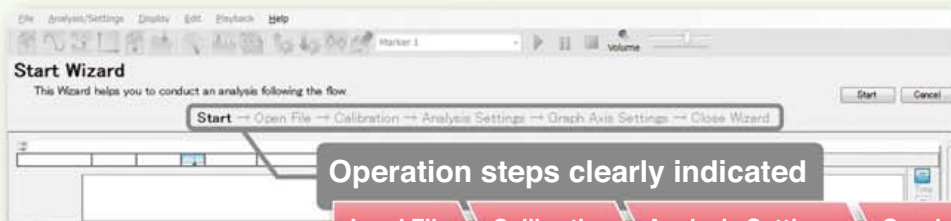
Easy and precise operation

Tool bar layout reflects operation sequence



Simply drag & drop to display a waveform file

## Convenient wizard function for first-time users



Load File → Calibration → Analysis Settings → Graph Axis Settings → Save File

## Template function makes it easy to repeat processing sequences

Automatic analysis

Load parameter settings created previously

Load Template

The settings (Calibration, Analysis, Graph Axis and Graph Size) are set according to the saved information.

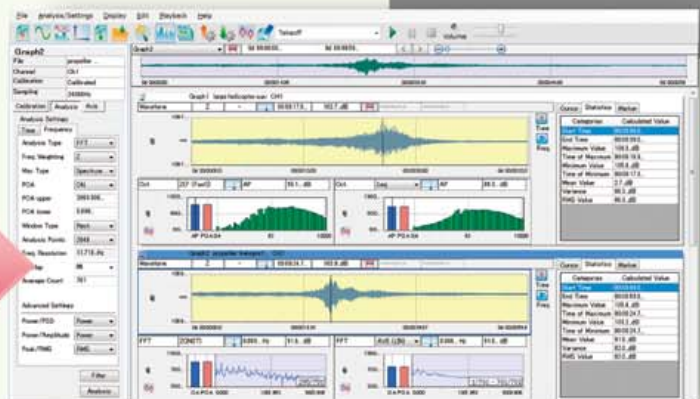
Select Template

FFT & OCT

Apply

Delete

Back



Vastly improved processing speed

Stress-free analysis of large data volumes

Comparison of processing time to previous product.

Previous product  
DA-20PA1

AS-70

Time from file reading to processing result display

Processing time  $\frac{1}{5}$  ※

※ Measurement conditions

|                         |                           |
|-------------------------|---------------------------|
| Operation environment   | CPU Core i5 3.2 GHz, 4 GB |
| Data file recorded time | 1 h 24 min.               |
| Processing time         | 6 min                     |

Simultaneous analysis of multiple files

WAVE files from different sources, such as a sound level meter and data recorder, and from multiple locations can be loaded and analyzed simultaneously. A variety of operations can be performed easily and with high processing speed, such as graphical display, level processing, sound playback and FFT and octave band analysis. The results can be saved in various formats.

### Setting method

Settings can be made globally or for each graph individually

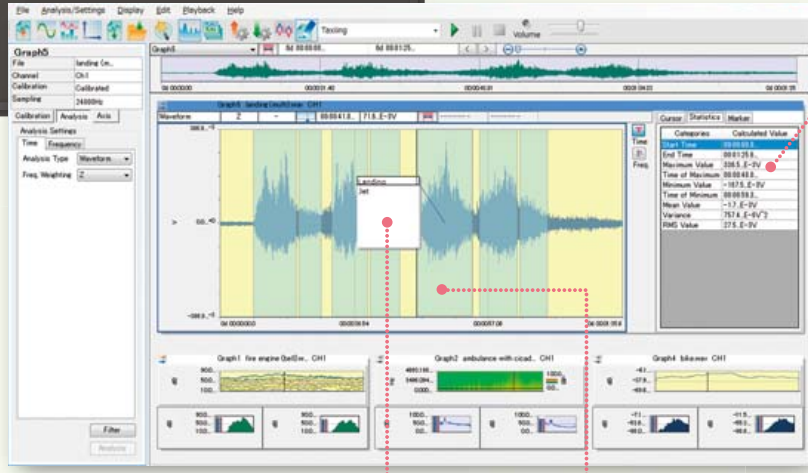
Global

Graph-specific

When operating with multiple graphs, the analysis type (octave band analysis, FFT analysis) and analysis parameters can be set either globally or for each graph separately.

## User marker function

Markers with comments can be placed on the time graph.



Access a specific point from the marker list

Choose from 10 types of marker names

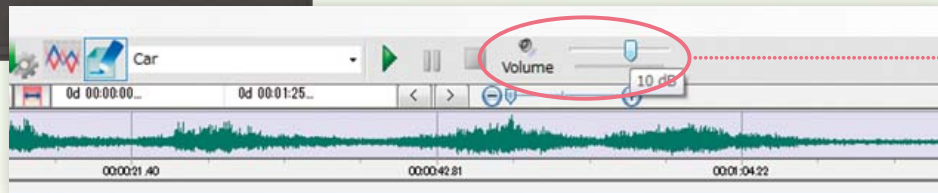


Enter any comment

Add marker

## Digital volume control

When playing back data with low recording level (because level range was too big, or bit word length too long), the volume may be very low, making the sound difficult to hear. The digital volume control lets you play such files at a higher volume.



Digital volume control

**Supported models** (WAVE files recorded with the following products can be used)

RIONOTE

NX-42WR

VX-55WR

NX-28WR

SA-78WR

DA-20/40/21

VA-12

General WAVE format files can also be opened (with some restrictions regarding sampling frequency and number of channels)

### Specifications

|                        |   |   |   |
|------------------------|---|---|---|
| Applicable standards   | IEC 61672-1:2013, JIS C 1509-1:2005 (Frequency weightings A, C, Z; Class 1)<br>ISO 7196:1995 (Frequency weighting characteristic G)<br>IEC 61260-1:2014, JIS C 1514:2002 (Octave-band and 1/3 octave-band filters, Class 1)<br>JIS C 1510:1995 (Frequency weightings for vertical and horizontal vibration) |   |   |
| Supported file format  | WAVE format<br>Sampling frequencies [Hz]: 64 k/51.2 k/48 k/32 k/25.6 k/24 k/16 k/12.8 k/12 k/5.12 k/2.56 k/2.4 k/1.28 k/1.2 k/1 k/512/256/240<br>Bit word length: 16 bit/24 bit   |   |   |
| Time graphs            | Display types   | Amplitude waveform, level waveform, band level, spectrogram   |   |
|                        | Frequency weighting characteristics   | Z, A, C, G, C to A, $L_{Vz}$ (vertical characteristics), $L_{Vxy}$ (horizontal characteristics)       |   |
|                        | Time weighting characteristics  | 10 ms, F (Fast), 630 ms, S (Slow), 10 s   |   |
| Frequency graphs       | Display types   | Octave band analysis, FFT analysis  |   |
|                        | Octave band analysis  | Bandwidth<br>Octave band: 0.5 Hz to 16 kHz (16 bands)<br>1/3 octave band: 0.4 Hz to 20 kHz (48 bands) |   |
|                        | FFT analysis  | Window functions  | Rectangular, Hanning, Flat-top, Hamming |
|                        |   | Number of analysis points   | 32 to 65 536 (base-2)                   |
|                        | Overlap   | 0 to 99 %   |   |
| Data view              | Power spectrum, power spectrum density (Power/Amplitude, Peak/RMS selectable)   |   |   |
| Statistical processing | Amplitude waveform  | Maximum value, minimum value, average value, variance, effective value                                |   |
|                        | Level waveform/octave analysis  | $L_{eq}$ , $L_E$ , $L_{max}$ , $L_{min}$ , $L_N$ (5 types)  |   |
|                        | FFT analysis  | Linear average, maximum value   |   |

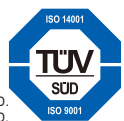
|                    |                                  |   |
|--------------------|----------------------------------|---|
| File save function | Save formats                     | WAVE format, text format  |
| Other functions    | Successive calculation results   | Results saved as text at calculation intervals (1 ms to 24 h)   |
|                    | Differential and integral filter | 1st order integration, 2nd order integration, 1st order differential, 2nd order differential              |
|                    | HPF, LPF                         | Cutoff frequency: any setting<br>Slope: 6 dB/12 dB/18 dB/24 dB (per octave)                               |
|                    | Overlay                          | Two frequency spectra can be shown as a superimposed (overlay) graph, with optional difference indication |
|                    | Real-sound playback              | Play, stop, pause, digital volume control   |
|                    | Clipboard copy                   | Screen_graph, list  |

|                                   |   |
|-----------------------------------|---|
| Recommended operation environment |   |
| CPU                               | Intel Core i5 2 GHz or faster   |
| RAM                               | 2 GB or more, 4 GB recommended  |
| HDD                               | 20 GB or more (free space), 100 GB or more recommended                                      |
| Display                           | XGA (1024 x 768 pixels) resolution or higher  |
| Supported operating systems       | Microsoft Windows 7 Professional 32 bit/64 bit, 8.1 Pro 32 bit/64 bit, 10 Pro 32 bit/64 bit |



**JCSS**

RION Co., Ltd. is recognized by the JCSS which uses ISO/IEC 17025 (JIS Q 17025) as an accreditation standard and bases its accreditation scheme on ISO/IEC 17011. JCSS is operated by the accreditation body (IA Japan) which is a signatory to the Asia Pacific Laboratory Accreditation Cooperation (APLAC) as well as the International Laboratory Accreditation Cooperation (ILAC). The Quality & Environmental Management system Center of RION Co., Ltd. is an international MRA compliant JCSS operator with the accreditation number JCSS 0197.



ISO 14001 RION CO., LTD.  
ISO 9 0 0 1 RION CO., LTD.

\* Windows is a trademark of Microsoft Corporation. \* Specifications subject to change without notice.

Distributed by:

**RION CO., LTD.**  
<http://rion-sv.com/>

3-20-41, Higashimotomachi, Kokubunji, Tokyo 185-8533, Japan  
Tel: +81-42-359-7888 Fax: +81-42-359-7442